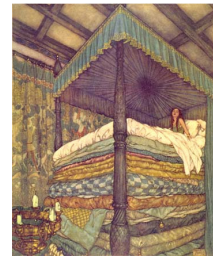




## Once Upon A Mattress

### Character Descriptions

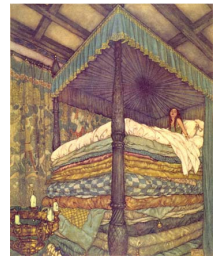


Named Characters & Descriptions	Gender	Vocal Part	Character's Age Range
<b>Minstrel</b> The handsome narrator of the story, as well as in the musical story line. He becomes smitten with Lady Larken and tries to persuade her to flee to Normandy with him. He and the Jester join forces to stop the Queen's plans.	male	tenor	20-35
<b>Princess No. 12</b> She is the first Princess that the audience sees who is performing the rounds of tests. Very eager, smart, thinks well on her feet – of course the Prince wants to marry her.	female	n/a	16-25
<b>Wizard</b> The egotistical, ex-performer who directly serves the Queen. He is the Queen's Henchman and thinks of all the Princess' tests. He prides himself in his position and basically obeys all of the Queen's orders.	male	baritone	60-85
<b>Lady Larken</b> Is the Queen's Lady-in-Waiting but is put in charge of Princess Winnifred. She is madly in love with Sir Harry and desperately wants to marry him because she is pregnant with his baby. She tries to flee the Kingdom after having an argument with Sir Harry, but is convinced by Winnifred to reunite with him.	female	soprano	18-27
<b>Queen Aggravain</b> The loud, talkative woman who really rules the country. She is an overprotective, stubborn, sly Mom who is trying to keep her son, Prince Dauntless, from getting married.	female	alto	50-65
<b>Prince Dauntless</b> A nice, not too smart, everyday type of young Prince who desperately wants to get married, but is prevented by his mother's strict tests that she gives to all potential candidates.	male	baritone	22-35
<b>King Sextimus the Silent</b> A kind, expressive, playful, and comedic character who is silent due to a curse placed upon him by a witch before the birth of Dauntless. He likes to chase girls through the corridors of the castle. Needs good improv skills.	male	mute	50-65
<b>Jester</b> An energetic and peppy man who is the King's right-hand man and assists him with every endeavor. The Jester also plots with the Minstrel to spoil the Queen's plans.	male	tenor	25-40
<b>Sir Harry</b> He is the Queen's Champion-in-Arms - the Lancelot of Knights - the macho, slightly egotistical, brave, romantic knight who decides to leave the kingdom to search for a princess, and finds Princess Winnifred in the swamp. Easily jealous, but loves Lady Larken with all his heart. Harry cannot marry Lady Larken until Prince Dauntless has found a suitable bride.	male	tenor	25-35
<b>Princess Winnifred the Woebegone</b> A feisty, outspoken, independent, strong, optimistic, and free-thinking princess from the swamp lands. She isn't too good with manners. She wants to get married, but must go through the queen's unfair test as well. The Prince, naturally, falls madly in love with her.	female	Mezzo - good belt	20-30



## Once Upon A Mattress

### Character Descriptions



Named Characters & Descriptions	Gender	Vocal Part	Character's Age Range
<b>Sir Studley</b> A member of the court who dances.	male	n/a	25-45
<b>Lady Mabelle</b> She's French and doesn't understand English to well – she just tends to say "Yes" a lot.	female	n/a	18-25
<b>Nightengale of Smarkand</b> A royal pet that sings a lullaby to put Winnifred to sleep.	either	must be able to whistle	young adult
<b>Ensemble:</b> The Ladies-in-Waiting and Knights and are all waiting for the Prince to get married so that THEY can get married to each other. These are character roles and are not just part of the chorus. <u>Queen's Ladies-in-waiting:</u> Lady Rowena, Lady Merrill, Lady Lucille, Lady Helena, Lady Sarah <u>Knights:</u> Sir Luce, Sir Russell, Sir Michael, Sir Humphrey <u>Kitchen Wench:</u> A woman chased around the castle by King Sextimus <u>Emily (chambermaid), Soldiers, Servants, Musicians</u>	both	various	15-60